

CERTIFICATE OF ANALYSIS

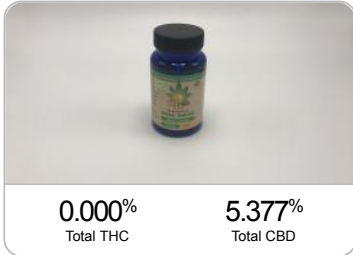


Order Name: 25mg Capsules
Batch#: 112818BSCP
Completed: 01/31/2019
Expires: 01/31/2020

SunFlora Inc.



Sample



Testing Overview

Test Name	Status
CANNABINOID PROFILE	TESTED
TERPENOID ANALYSIS	NOT TESTED
PESTICIDES ANALYSIS	NOT TESTED
RESIDUAL SOLVENTS ANALYSIS	NOT TESTED
MYCOTOXIN ANALYSIS	NOT TESTED
MICROBIAL ANALYSIS	NOT TESTED
HEAVY METAL ANALYSIS	NOT TESTED
MOISTURE ANALYSIS	NOT TESTED
WATER ACTIVITY	NOT TESTED
FOREIGN MATERIALS ANALYSIS	NOT TESTED

Cannabinoids Test

HPLC - Shimadzu LC2030C Plus

cannabinoids		weight(%)	mg/g
DELTA-9-TETRAHYDROCANNABINOL	D9-THC	N/D	N/D
TETRAHYDROCANNABINOLIC ACID	THCA	N/D	N/D
CANNABIDIOL	CBD	5.374%	53.740
CANNABIDIOLIC ACID	CBDA	0.004%	0.040
CANNABIDIVARIN	CBDV	0.049%	0.490
CANNABICHROMENE	CBC	0.351%	3.510
CANNABINOL	CBN	0.053%	0.530
CANNABIGEROL	CBG	0.050%	0.500
CANNABIGEROLIC ACID	CBGA	N/D	N/D
DELTA-8-TETRAHYDROCANNABINOL	D8-THC	N/D	N/D
TETRAHYDROCANNABIVARIN	THCV	N/D	N/D

Notes

26.9 mg per capsule



4001 SW 47th Avenue Suite 207
Davie, FL 33314
1-833-TEST-CBD
info@greenscientificlabs.com




Dylan Swart, Lab Director

Green Scientific Labs uses its best efforts to deliver high quality results and to verify that the data contained therein are based on sound scientific judgment and levels listed are guidelines only and all data was reported based on standard laboratory procedures and deviations. However Green Scientific Labs makes no warranties or claims to that effect and further shall not be liable for any damage or misrepresentation that may result from the use or misuse of the data contained herein in any way. Further, Green Scientific Labs makes no claims regarding representations of the analyzed sample to the larger batch from which it was taken. Data and information in this report are intended solely for the individual(s) for whom samples were submitted and as part of our strict confidentiality policy, Green Scientific Labs can only discuss results with the original client of record.

CERTIFICATE OF ANALYSIS



Order Name: 10mg Capsules
 Batch#: 112818BSCP
 Completed: 02/04/2019
 Expires: 02/04/2020

SunFlora Inc.

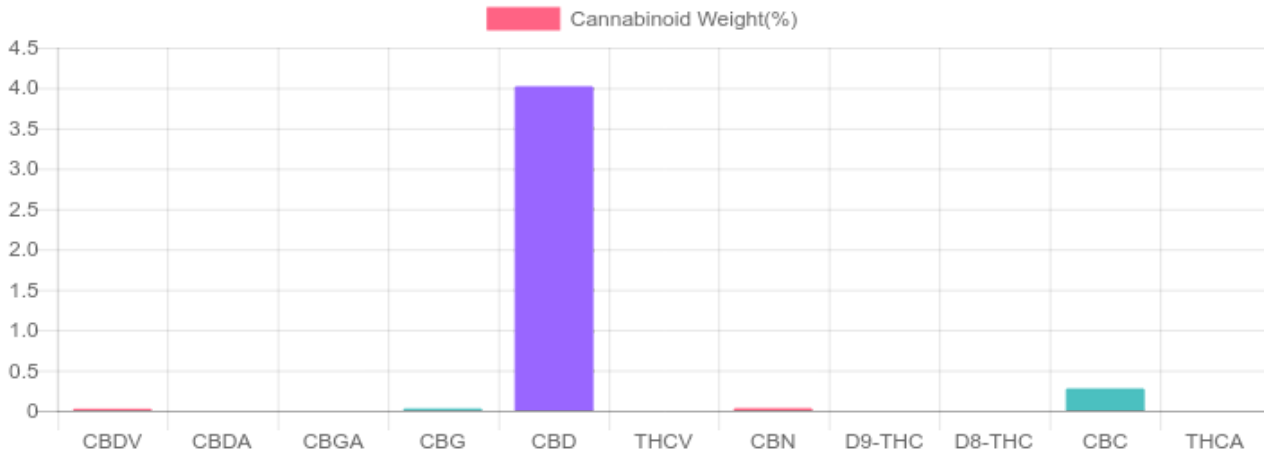


Sample



Cannabinoids Test

cannabinoids		weight(%)	mg/g
DELTA-9-TETRAHYDROCANNABINOL	D9-THC	N/D	N/D
TETRAHYDROCANNABINOLIC ACID	THCA	N/D	N/D
CANNABIDIOL	CBD	4.020%	40.200
CANNABIDIOLIC ACID	CBDA	N/D	N/D
CANNABIDIVARIN	CBDV	0.025%	0.250
CANNABICHROMENE	CBC	0.276%	2.760
CANNABINOL	CBN	0.031%	0.310
CANNABIGEROL	CBG	0.028%	0.280
CANNABIGEROLIC ACID	CBGA	N/D	N/D
DELTA-8-TETRAHYDROCANNABINOL	D8-THC	N/D	N/D
TETRAHYDROCANNABIVARIN	THCV	N/D	N/D
TOTAL THC = D9-THC + THCA X 0.877		TOTAL THC	0.000%
TOTAL CBD = CBD + CBDA X 0.877		TOTAL CBD	4.020%
		TOTAL CANNABINOIDS	4.379%



4001 SW 47th Avenue Suite 207
 Davie, FL 33314
 1-833-TEST-CBD
 info@greenscientificlabs.com



Dylan Swart
 Dylan Swart, Lab Director

Green Scientific Labs uses its best efforts to deliver high quality results and to verify that the data contained therein are based on sound scientific judgment and levels listed are guidelines only and all data was reported based on standard laboratory procedures and deviations. However Green Scientific Labs makes no warranties or claims to that effect and further shall not be liable for any damage or misrepresentation that may result from the use or misuse of the data contained herein in any way. Further, Green Scientific Labs makes no claims regarding representations of the analyzed sample to the larger batch from which it was taken. Data and information in this report are intended solely for the individual(s) for whom samples were submitted and as part of our strict confidentiality policy, Green Scientific Labs can only discuss results with the original client of record.

CERTIFICATE OF ANALYSIS



Order Name: 10mg Capsules
 Batch#: 112818BSCP
 Completed: 02/04/2019
 Expires: 02/04/2020

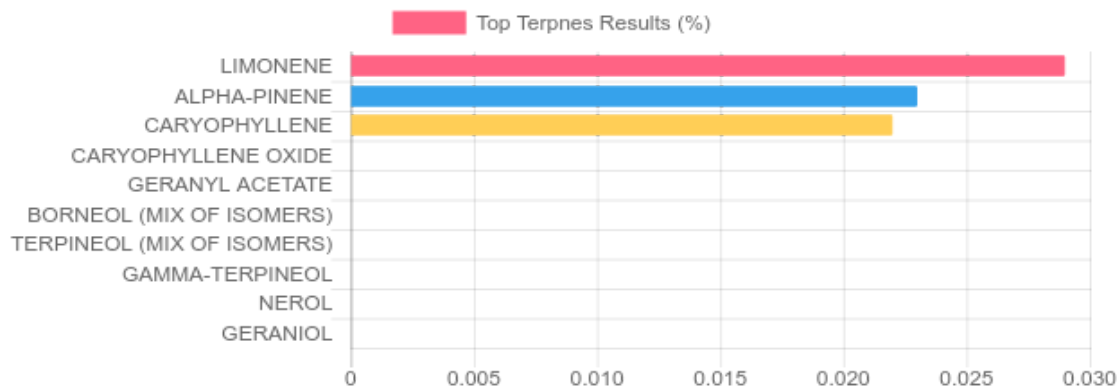
SunFlora Inc.



TERPENES:

GC-Headspace - Shimadzu GCMS QP2020 with HS20

Terpene	Results (%)	Terpene	Results (%)
(1R)-ENDO-(+)-FENCHYL ALCOHOL	N/D	GAMMA-TERPINEOL	N/D
3-CARENE	N/D	GAMMA-TERPINENE	N/D
ALPHA-BISABOLOL	N/D	GERANIOL	N/D
ALPHA-CEDRENE	N/D	GERANYL ACETATE	N/D
ALPHA-PINENE	0.002%	GUAJOL	N/D
ALPHA-TERPINENE	N/D	HUMULENE	N/D
ALPHA-PHELLANDRENE	N/D	ISOBORNEOL	N/D
BETA-MYRCENE	N/D	ISOPULEGOL	N/D
BETA-PINENE	N/D	LIMONENE	0.003%
BORNEOL (MIX OF ISOMERS)	N/D	LINALOOL	N/D
CAMPHENE	N/D	MENTHOL	N/D
CAMPHOR	N/D	NEROL	N/D
CAMPHOR (MIX OF ISOMERS)	N/D	PULEGONE	N/D
CARYOPHYLLENE	0.002%	SABINENE	N/D
CARYOPHYLLENE OXIDE	N/D	SABINENE HYDRATE	N/D
CEDROL	N/D	TERPINEOL (MIX OF ISOMERS)	N/D
CIS-BETA-OCIMENE	N/D	TERPINOLENE	N/D
CIS-NEROLIDOL	N/D	TRANS-BETA-OCIMENE	N/D
EUCALYPTOL	N/D	TRANS-NEROLIDOL	N/D
FENCHONE	N/D	VALENCENE	N/D
FENCHONE (ISOMER)	N/D		



4001 SW 47th Avenue Suite 207
 Davie, FL 33314
 1-833-TEST-CBD
 info@greenscientificlabs.com



Dylan Swart
 Dylan Swart, Lab Director

Green Scientific Labs uses its best efforts to deliver high quality results and to verify that the data contained therein are based on sound scientific judgment and levels listed are guidelines only and all data was reported based on standard laboratory procedures and deviations. However Green Scientific Labs makes no warranties or claims to that effect and further shall not be liable for any damage or misrepresentation that may result from the use or misuse of the data contained herein in any way. Further, Green Scientific Labs makes no claims regarding representations of the analyzed sample to the larger batch from which it was taken. Data and information in this report are intended solely for the individual(s) for whom samples were submitted and as part of our strict confidentiality policy, Green Scientific Labs can only discuss results with the original client of record.

CERTIFICATE OF ANALYSIS



Order Name: 10mg Capsules
Batch#: 112818BSCP
Completed: 02/04/2019
Expires: 02/04/2020

SunFlora Inc.



RESIDUAL SOLVENTS:

GC-Headspace - Shimadzu GCMS QP2020 with HS20

Residual Solvent	Action Level (ppm)	Results (ppm)
ACETONE	5,000.000	N/D
ACETONITRILE	410.000	N/D
BENZENE	1.000	N/D
BUTANE	5,000.000	N/D
CHLOROFORM	1.000	N/D
DICHLOROETHANE	1.000	N/D
DICHLOROMETHANE	1.000	N/D
ETHANOL	5,000.000	N/D
ETHYL ACETATE	5,000.000	N/D
ETHYL ETHER	5,000.000	N/D
ISOPROPYL ALCOHOL	5,000.000	N/D
METHANOL	3,000.000	N/D
N-HEPTANE	5,000.000	N/D
N-HEXANE	290.000	N/D
PENTANE	5,000.000	N/D
PROPANE	5,000.000	N/D
TOLUENE	890.000	N/D
TRICHLOROETHANE	1.000	N/D
XYLENES	2,170.000	N/D



4001 SW 47th Avenue Suite 207
Davie, FL 33314
1-833-TEST-CBD
info@greenscientificlabs.com




Dylan Swart, Lab Director

Green Scientific Labs uses its best efforts to deliver high quality results and to verify that the data contained therein are based on sound scientific judgment and levels listed are guidelines only and all data was reported based on standard laboratory procedures and deviations. However Green Scientific Labs makes no warranties or claims to that effect and further shall not be liable for any damage or misrepresentation that may result from the use or misuse of the data contained herein in any way. Further, Green Scientific Labs makes no claims regarding representations of the analyzed sample to the larger batch from which it was taken. Data and information in this report are intended solely for the individual(s) for whom samples were submitted and as part of our strict confidentiality policy, Green Scientific Labs can only discuss results with the original client of record.

CERTIFICATE OF ANALYSIS



Order Name: 10mg Capsules
Batch#: 112818BSCP
Completed: 02/04/2019
Expires: 02/04/2020

SunFlora Inc.



Heavy Metals Analysis:

ICP-MS - Shimadzu ICPMS-2030

Metal	Action Level (ppb)	Result (ppb)
ARSENIC (AS)	200.000	BELOW LOQ
CADMIUM (CD)	200.000	BELOW LOQ
MERCURY (HG)	100.000	BELOW LOQ
LEAD (PB)	500.000	BELOW LOQ

*Lower Limit of Quantitation (LOQ) is 50 ppb



4001 SW 47th Avenue Suite 207
Davie, FL 33314
1-833-TEST-CBD
info@greenscientificlabs.com




Dylan Swart, Lab Director

Green Scientific Labs uses its best efforts to deliver high quality results and to verify that the data contained therein are based on sound scientific judgment and levels listed are guidelines only and all data was reported based on standard laboratory procedures and deviations. However Green Scientific Labs makes no warranties or claims to that effect and further shall not be liable for any damage or misrepresentation that may result from the use or misuse of the data contained herein in any way. Further, Green Scientific Labs makes no claims regarding representations of the analyzed sample to the larger batch from which it was taken. Data and information in this report are intended solely for the individual(s) for whom samples were submitted and as part of our strict confidentiality policy, Green Scientific Labs can only discuss results with the original client of record.

CERTIFICATE OF ANALYSIS

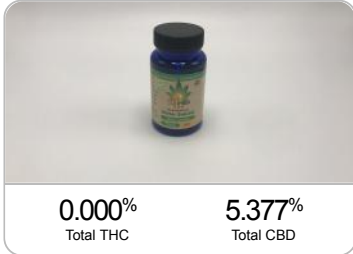


Order Name: 25mg Capsules
 Batch#: 112818BSCP
 Completed: 01/31/2019
 Expires: 01/31/2020

SunFlora Inc.

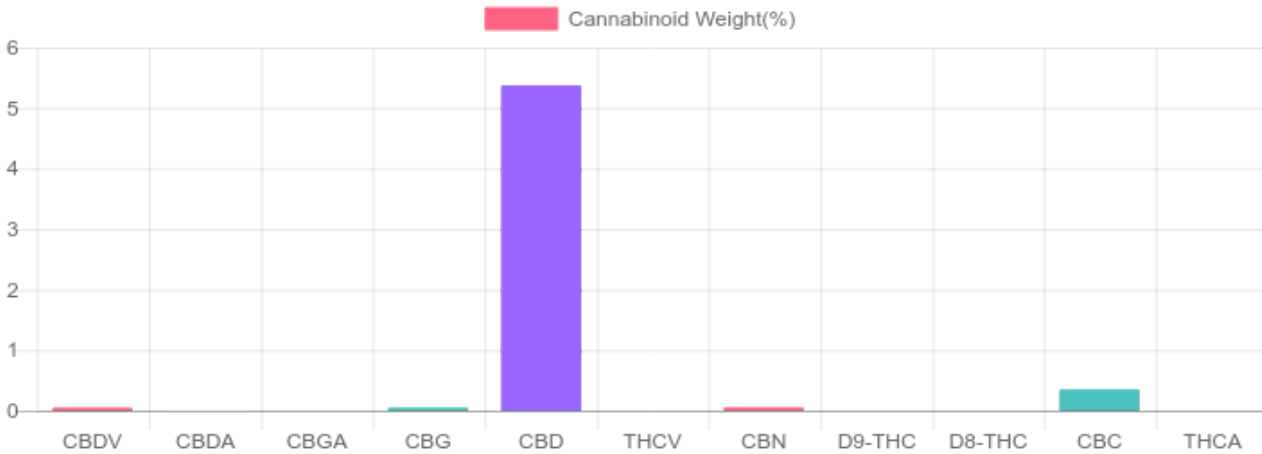


Sample



Cannabinoids Test

cannabinoids		weight(%)	mg/g
DELTA-9-TETRAHYDROCANNABINOL	D9-THC	N/D	N/D
TETRAHYDROCANNABINOLIC ACID	THCA	N/D	N/D
CANNABIDIOL	CBD	5.374%	53.740
CANNABIDIOLIC ACID	CBDA	0.004%	0.040
CANNABIDIVARIN	CBDV	0.049%	0.490
CANNABICHROMENE	CBC	0.351%	3.510
CANNABINOL	CBN	0.053%	0.530
CANNABIGEROL	CBG	0.050%	0.500
CANNABIGEROLIC ACID	CBGA	N/D	N/D
DELTA-8-TETRAHYDROCANNABINOL	D8-THC	N/D	N/D
TETRAHYDROCANNABIVARIN	THCV	N/D	N/D
TOTAL THC = D9-THC + THCA X 0.877		TOTAL THC	0.000%
TOTAL CBD = CBD + CBDA X 0.877		TOTAL CBD	5.377%
		TOTAL CANNABINOIDS	5.881%



4001 SW 47th Avenue Suite 207
 Davie, FL 33314
 1-833-TEST-CBD
 info@greenscientificlabs.com



Dylan Swart, Lab Director

Green Scientific Labs uses its best efforts to deliver high quality results and to verify that the data contained therein are based on sound scientific judgment and levels listed are guidelines only and all data was reported based on standard laboratory procedures and deviations. However Green Scientific Labs makes no warranties or claims to that effect and further shall not be liable for any damage or misrepresentation that may result from the use or misuse of the data contained herein in any way. Further, Green Scientific Labs makes no claims regarding representations of the analyzed sample to the larger batch from which it was taken. Data and information in this report are intended solely for the individual(s) for whom samples were submitted and as part of our strict confidentiality policy, Green Scientific Labs can only discuss results with the original client of record.